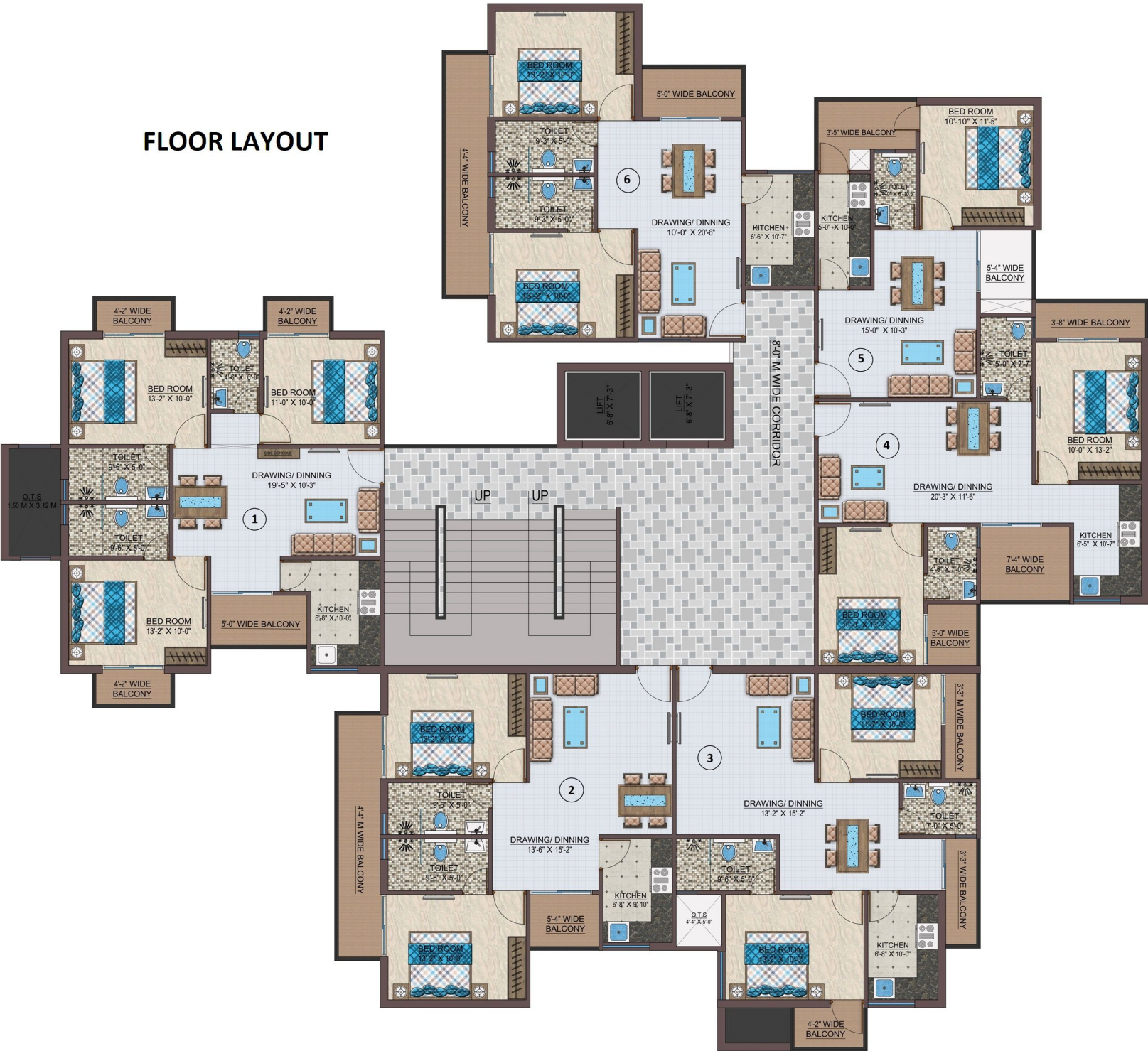






FLOOR LAYOUT



4'-2" WIDE
BALCONY

4'-2" WIDE
BALCONY



BED ROOM
13'-2" X 10'-0"



TOILET
4'-6" X 6'-8"



BED ROOM
11'-0" X 10'-0"



O.T.S
1.50 M X 3.12 M

TOILET
9'-6" X 5'-0"



TOILET
9'-6" X 5'-0"

DRAWING/ DINNING
19'-5" X 10'-3"



BED ROOM
13'-2" X 10'-0"

5'-0" WIDE BALCONY

KITCHEN
6'-8" X 10'-0"



4'-2" WIDE
BALCONY

TYPE 01
BUILD UP: 1113 SQ FT
CARPET: 817 SQ FT



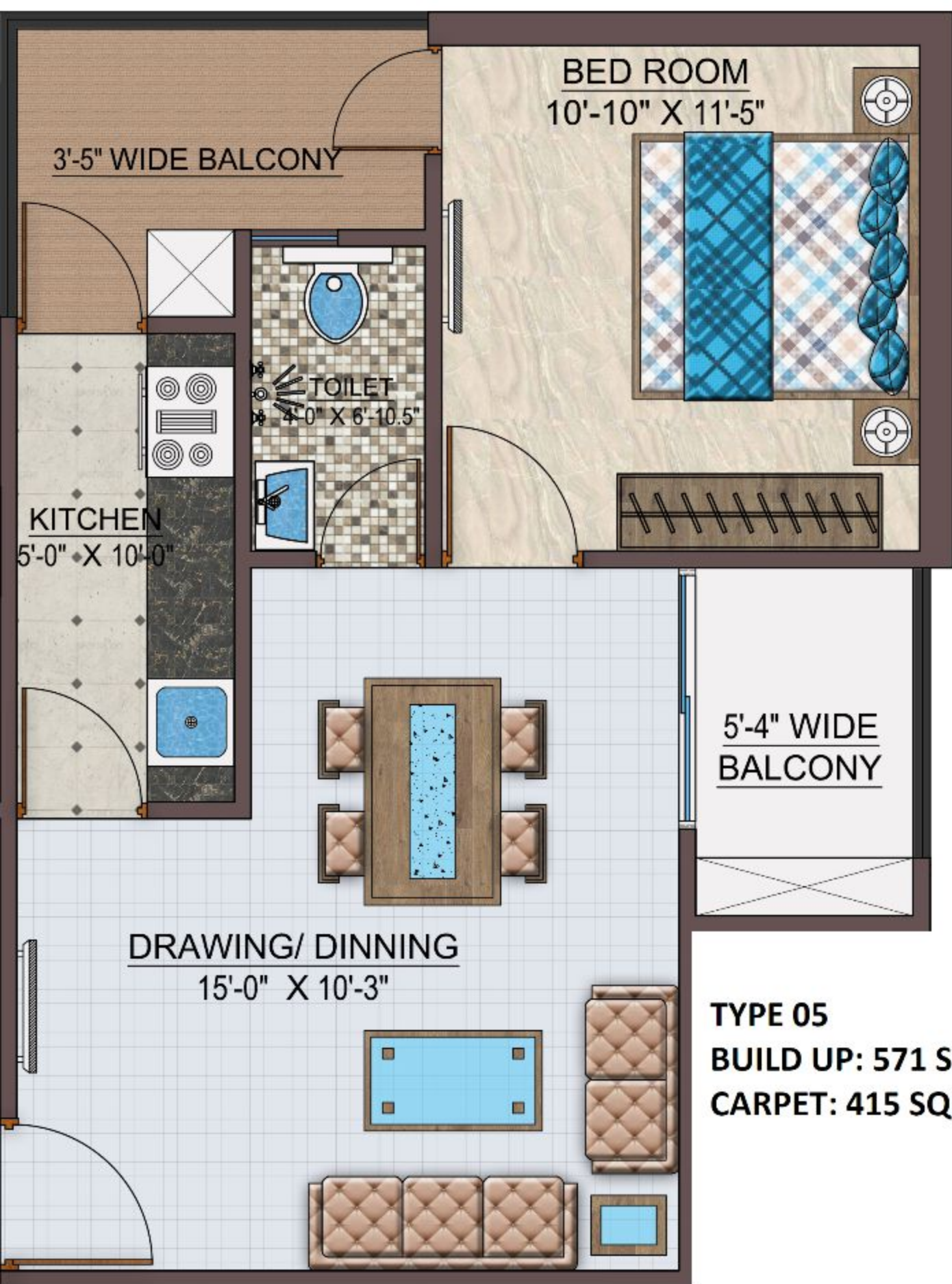
TYPE 02
BUILD UP: 941 SQ FT
CARPET: 704 SQ FT



TYPE 03
BUILD UP: 968 SQ FT
CARPET: 672 SQ FT



TYPE 04
BUILD UP: 867 SQ FT
CARPET: 653 SQ FT



BED ROOM
10'-10" X 11'-5"

3'-5" WIDE BALCONY

TOILET
4'-0" X 6'-10.5"

KITCHEN
5'-0" X 10'-0"

5'-4" WIDE BALCONY

DRAWING/ DINNING
15'-0" X 10'-3"

TYPE 05
BUILD UP: 571 SQ FT
CARPET: 415 SQ FT

TYPE 06
BUILD UP: 910 SQ FT
CARPET: 721SQ FT

5'-0" WIDE BALCONY

BED ROOM
13'-2" X 10'-0"

TOILET
9'-3" X 5'-0"

TOILET
9'-3" X 5'-0"

DRAWING/ DINNING
10'-0" X 20'-6"

KITCHEN
6'-6" X 10'-7"

4'-4" WIDE BALCONY

BED ROOM
13'-2" X 10'-0"

